

At Lanark PS & ELC we will focus on three main areas as part of our improvement planning in 2019/20- Literacy, Health and Wellbeing and Developing the Young Workforce



Lanark Primary School and ELC  
Learning together, growing together



### 3 Developing the Young Workforce

To develop a skills pathway across the ELC and school for DYW and Careers Education (Primary & ELC)

### 1 Literacy

- To maintain a focus on improvement in attainment in Literacy with a particular focus on developing learners' skills in Writing
- To maintain a focus on improvement in attainment in Literacy with a particular focus on developing learners' emergent skills in Writing (ELC)

**To be productive, *Talk for Writing* needs to be embedded in every phase of the teaching sequence**

- During reading:** when familiarising with the genre/text type and it's key features
- Before writing:** when generating ideas, preparing for and planning writing.
- During all stages of writing:** when making choices involved in creating, developing and improving texts.
- After writing:** when reflecting on and learning from a writing experience.

We plan to improve our 'whole school programme' to support the teaching in Writing to ensure consistency across P1-P7. We will initially focus on 'story writing' using the *Talk for Writing* Approach, but we'll also look at writing for information e.g. reports and handwriting too.

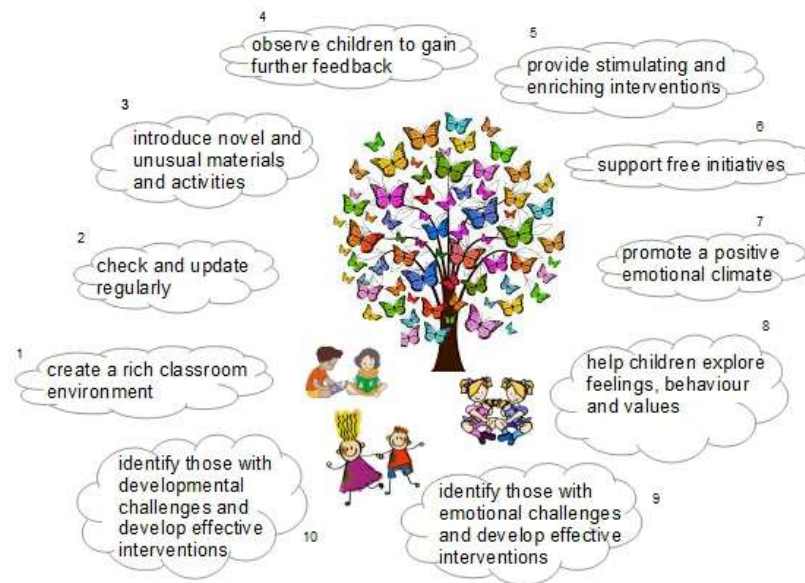
ELC staff will work together to improve emergent writing skills in our early learners. This will include looking at how we can support the building of an increased vocabulary in the Playroom.

### 2



### Health and Wellbeing

- To establish a consistent approach to learning and teaching HWB with a particular focus on emotional and mental health.
- To establish a consistent approach to learning and teaching HWB with a particular focus on Wellbeing Indicators



Learners will be able to identify skills for Life, Learning and Work

A DYW Skills Pathway (including Outdoor Learning/Technology) will be established

