



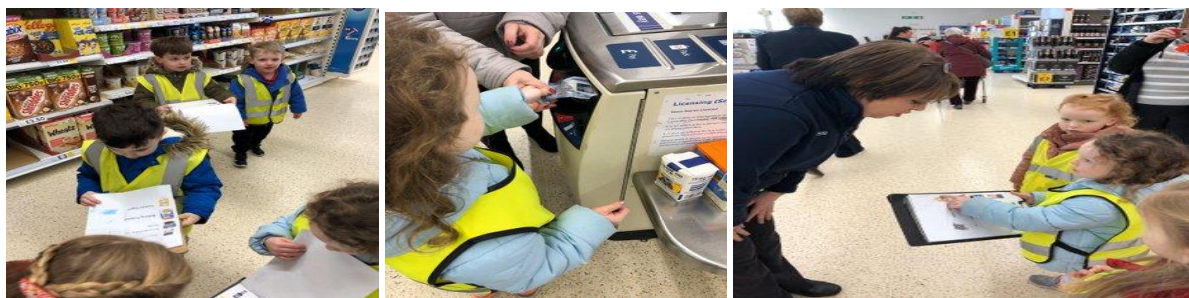
# Lanark Primary ELC Newsletter



## March 2020

What a busy month we have had in the ELC with so many exciting learning experiences taking place! Our learners loved the activities planned throughout the week for World Book Day and had fun joining in with the rest of the school in the 'River of Reading'.

They have also been out and about in the community visiting Tesco to develop their skills for learning, life and work. They used their shopping list to buy items for snack and baking, and even had to ask one of the store assistants for help when they couldn't find the caster sugar!



As always, if you have any concerns or issues, please do not hesitate to speak to your child's key worker or any member of our team.

*The Staff Team*



### HMIe Inspection

As you know, our results from our inspection in November 2019 were published in February this year. The report detailed the many strengths of the school and ELC, including the polite, well-behaved, and enthusiastic learners, the highly effective teamwork across the staff team and the whole school community, and the wellbeing of children which is embedded in all day-to-day interactions and activities. Moving forward, we will continue to raise attainment in Literacy and Numeracy and improve our self-evaluation practices in the ELC.

May we take this opportunity to thank all staff, parents, partners and especially our early learners for continuing to work so hard in order to ensure everyone can reach their full potential here at Lanark ELC.

### Staffing

We said a fond farewell to Mrs Lorraine Hamilton, our early years practitioner, who has been with us since October covering Miss Graham on a Friday. We are delighted to welcome Miss Katie Garrity into the playroom as her replacement. She will be working closely with our staff team.

### Parent/Carer Consultations

Thank you to all parents and carers who came along to our consultations last week. We greatly value your partnership and hope you found your time with your child's key worker to be really informative.



### Family Bingo Night



You should now have received your flyer about this year's Family Bingo Night. This will be held in St. Nicholas Church Hall on Friday 20<sup>th</sup> March at 7pm. Tickets on the door cost £3 for adults and children are free. Tickets will be available from the school office and at the door on the night. This is a 'bring your own bottle and snacks' event (not free).

We would respectfully request that any tickets are handed into the school for the 'bottle stall'- many thanks.

### Lunches

If you know your child is going to be late in, can we kindly ask that you call the ELC to let them know what they would like for lunch **before 9.30am**. This allows us to inform the canteen staff well in advance, many thanks.

### March Birthdays

Happy Birthday this month to:

Oscar McCusker  
Hannah Marshall  
Mia Walmsley



### Rag Bag Collection

The next collection will take place on **Wednesday 25<sup>th</sup> March**. Please bring any bags to the office for Tuesday 24<sup>th</sup> March- thank you!



### Parent/Carer Chit Chat Group

Thank you to all parents/carers who came along to our last Chit Chat group meeting. Our next meeting will be on **Monday 27<sup>th</sup> April** at 2.15pm-2.45pm. Please come along and join us before you collect your child for some tea/coffee and biscuits, as well as having a chat about what's happening in the ELC!



### Wellbeing Indicator of the Month- Responsible

Every month we introduce/reinforce one of the areas which helps our children explore their wellbeing and how this can be improved or supported. This month's focus is on being RESPONSIBLE. This means having opportunities and encouragement to play active and responsible roles at home, in the ELC and in the community. It also means that where necessary, having appropriate guidance and supervision, and being involved in decisions that affect them. Again, our Pupil Leadership Teams are a great example of this.



### Toy Sale

Our Community Ambassadors organised a fantastic Toy Sale last month and raised over £600 for Castlebank Horticultural Centre. Well done to our community ambassadors and Ms Forbes!

### Earth Hour



The Eco Pupil Leadership Team would like to draw your attention to Earth Hour, a global movement, which brings millions together across the world to switch off their lights and show they care about the future of our planet. This year's Earth Hour takes place on **Saturday 28<sup>th</sup> March at 8:30pm.**

### Coronavirus - Information Update

We can confirm that this week further guidance from Health Protection Scotland has been issued to all schools and educational establishments. Given the need for good hygiene practice you are asked to note the following:

The washing of hands often with soap and water, or through an alcohol based hand sanitiser if handwashing facilities are not available is advised to help prevent the spread of respiratory viruses.

Advice from health practitioners is that parents/carers have an important role to play in letting their children know about the importance of washing their hands often, before eating and after using the toilet.

**SLC has taken an action to provide schools with pump action hand sanitisers for entrance areas and classrooms/playrooms. These will be re-filled by the janitor who will also check that toilet areas have soap and paper towels in the morning and after lunchtime each day.**

If you plan on going on holiday, please contact the school, so we can share any updated guidance for educational establishments with you. Many thanks for your continued support.



## Diary Dates

Forest Kindergarten -parents/carers invited Tues. 24 <sup>th</sup> March -SLC visitors invited Tues. 31 <sup>st</sup> March	Tuesday 3 <sup>rd</sup> /10 <sup>th</sup> /17 <sup>th</sup> /24 <sup>th</sup> /31 <sup>st</sup> March
Bookbug Open Sessions	Every Wednesday at: 10.45am-11.15am and 3.15pm-3:45pm
PLT Meetings	Wednesday 18 <sup>th</sup> March
Family Bingo Night	Friday 20 <sup>th</sup> March at 7pm
Rag Bag Collection	Wednesday 25 <sup>th</sup> March
Earth Hour	Saturday 28 <sup>th</sup> March (8.30pm-9.30pm)
Finish up for Spring Break	Friday 3 <sup>rd</sup> April at 2:30pm
ELC Re-opens	Monday 20 <sup>th</sup> April
Chit Chat Group	Monday 27 <sup>th</sup> April at 2.15pm-2.45pm
PLT Meetings	Wednesday 29 <sup>th</sup> April

We are always looking to continually improve our ELC. We are looking to adapt our pupils' Learning Profiles so if you have any suggestions for how we could do this, please use the box below and pop it into the suggestion box in the foyer. Some questions you may wish to consider are- What would you like to see in them? Do you regularly discuss the contents of them with your child? Thank you for your continued support as we work together in partnership to help your child achieve their full potential.

